

A CARTOON BOOK

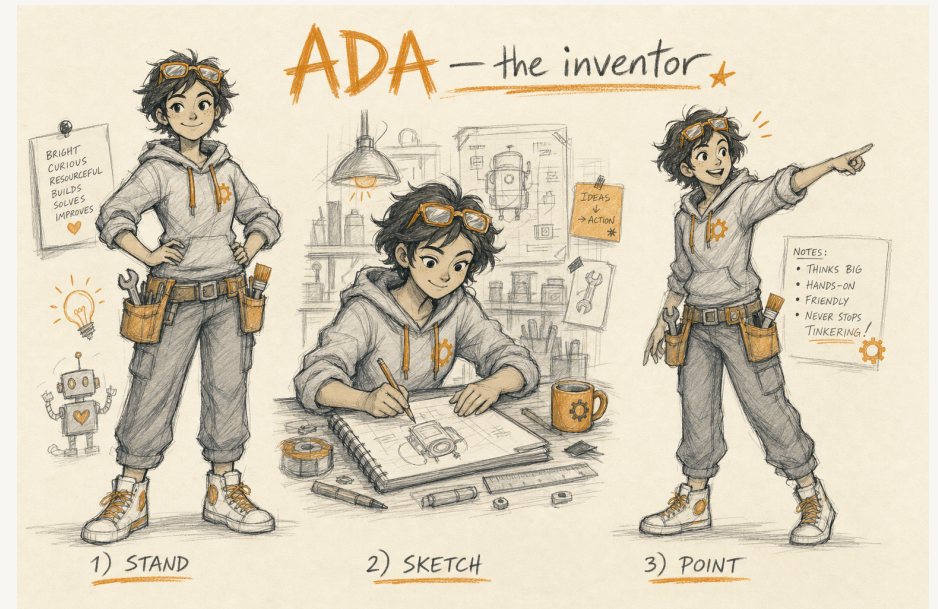
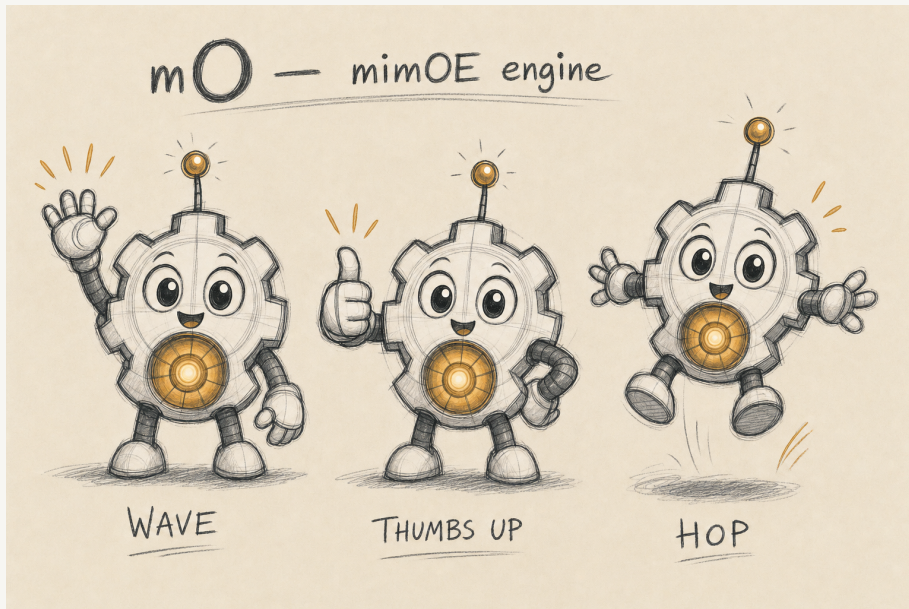
## Meet mO

The Little Engine  
That Lets Smart  
Devices Think  
Together

A visual, non-technical story about **mimOE** and **mimOE Studio**, for anyone who wants to understand how smart devices can finally think for themselves.

BEFORE WE BEGIN —

Meet the two friends in this story.



mO

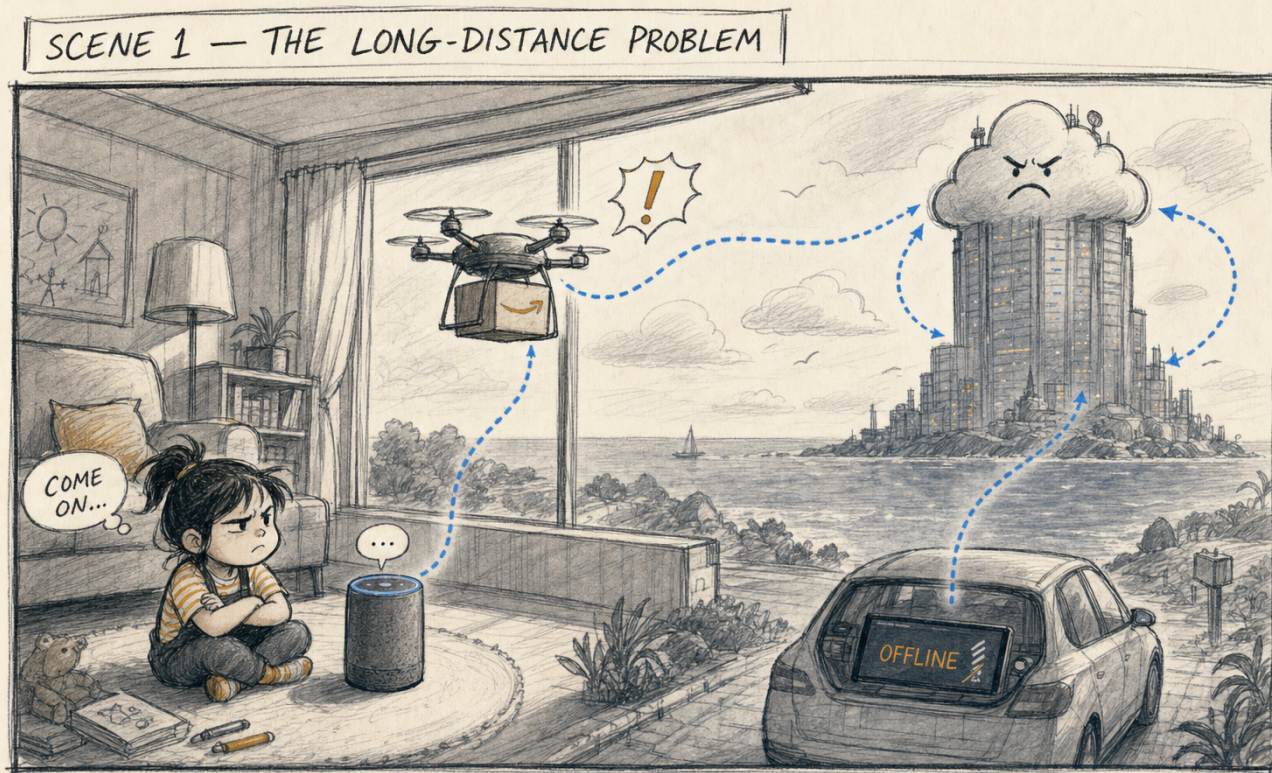
The mimOE engine. Tiny. Plucky. Lives inside things.

Ada

The inventor. Builds, tests, and ships in mimOE Studio.

## SCENE 01

## The Long-Distance Problem



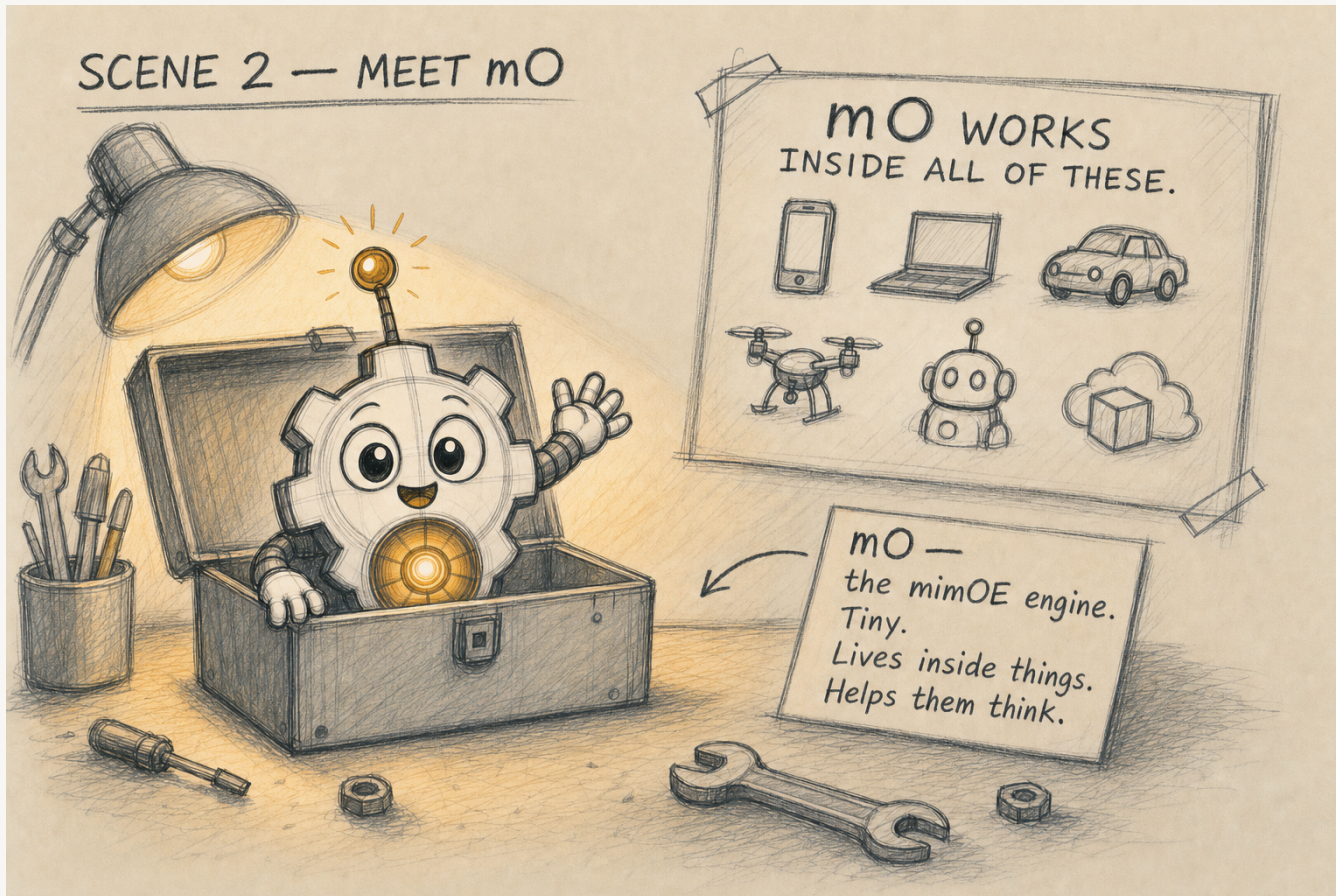
---

Every smart thing in our world has a secret: most of them can't actually think on their own. They have to ask a faraway cloud, and wait.

\* devices cant think on their own.

## SCENE 02

## Meet mO

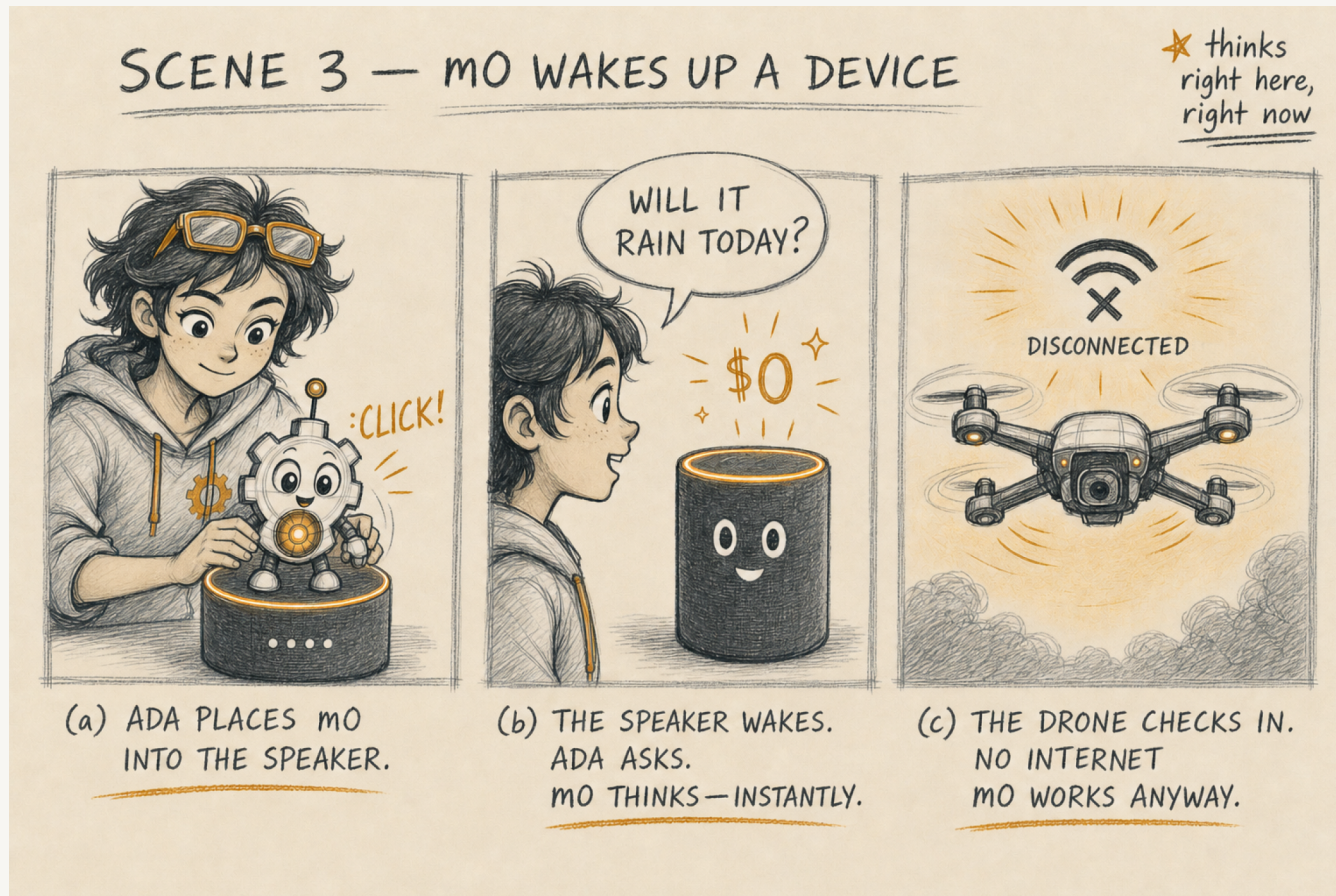


---

Meet mO. mO is a tiny engine called mimOE. Drop mO into almost anything with a chip, a phone, a laptop, a car, a drone, even a cloud server, and that thing wakes up.

## SCENE 03

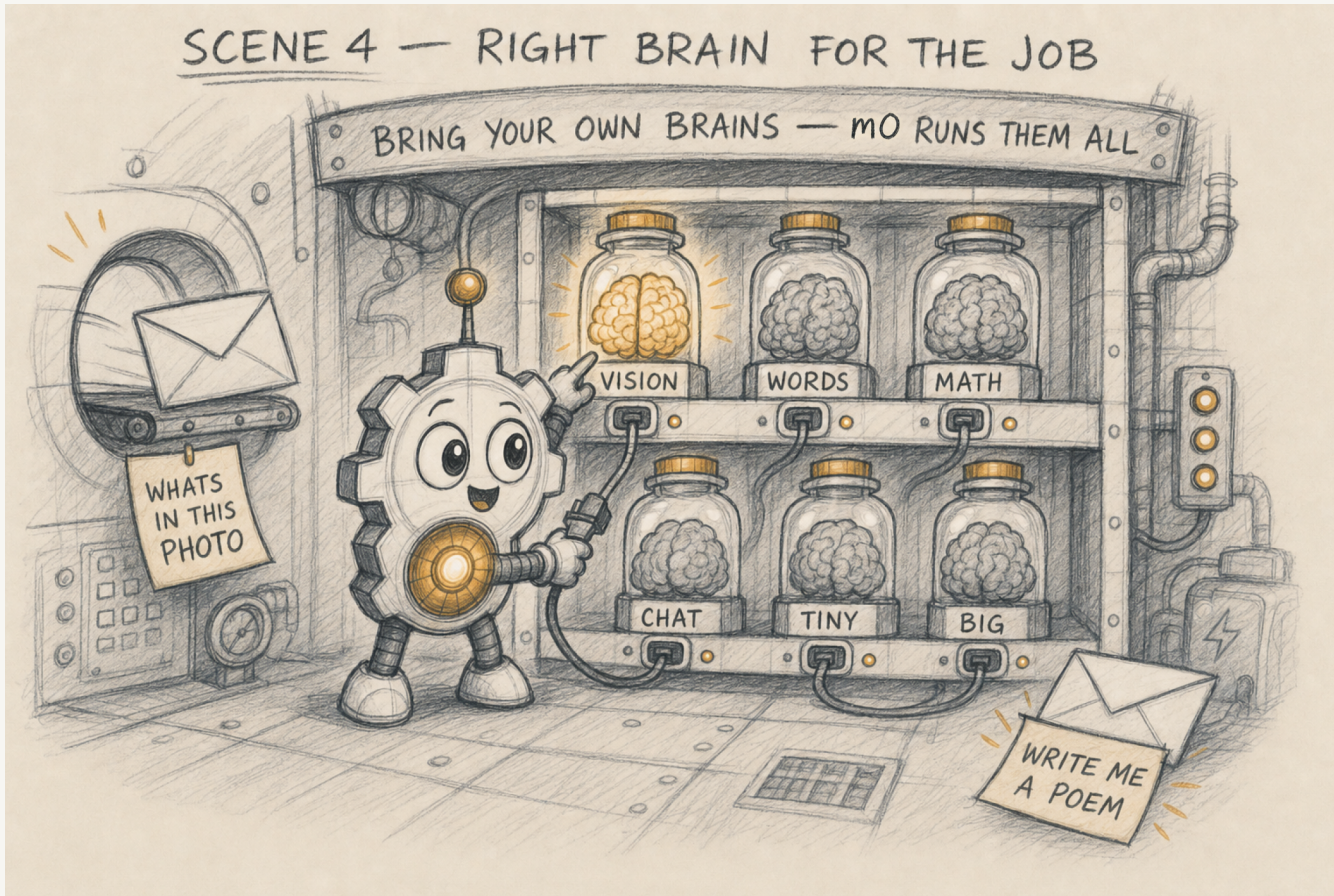
## mO Wakes Up a Device



With mO inside, a device can think right here, right now. No long-distance call. Even when the Internet is gone.

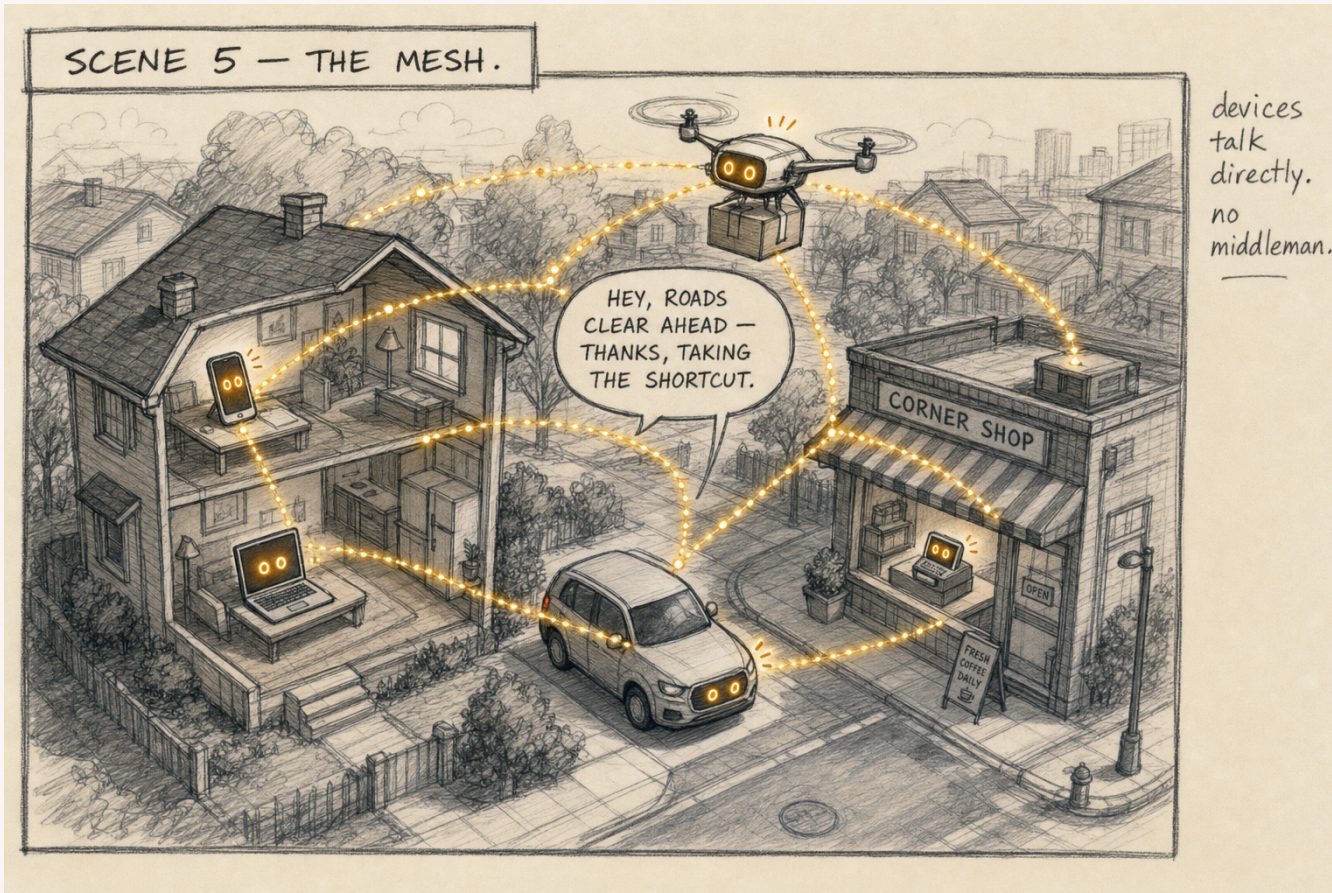
## SCENE 04

## The Right Brain for the Job



---

mO doesn't care which brain you bring. Big or small, your favorite or a new one, mO can run them, mix them, and pick the right one for the job.



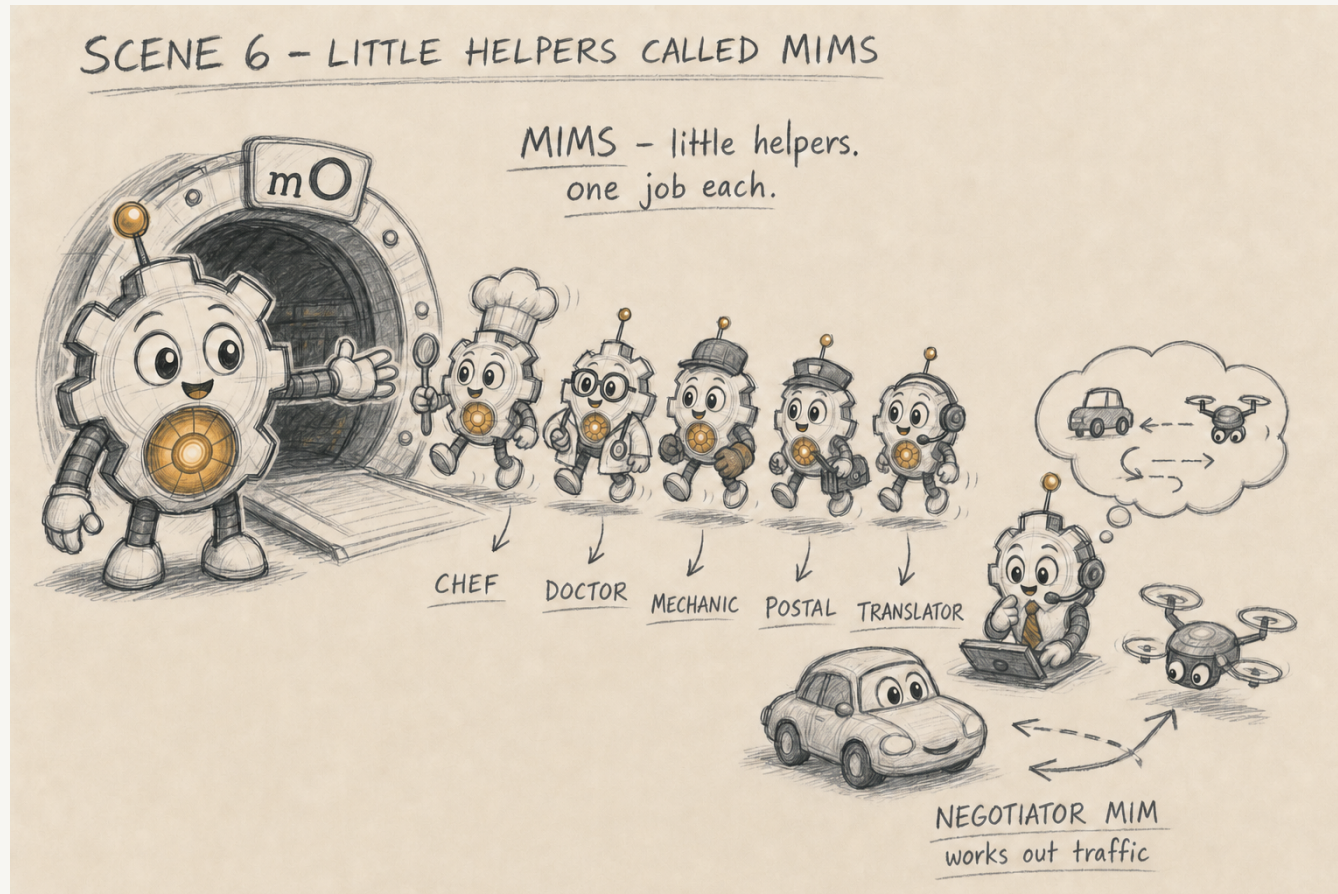
## SCENE 05

# Devices Make Friends, The Mesh

Devices with mO inside find each other, across the room, across the street, across the world, and talk directly. No middleman. We call it the mesh.

## SCENE 06

## Little Helpers Called Mims



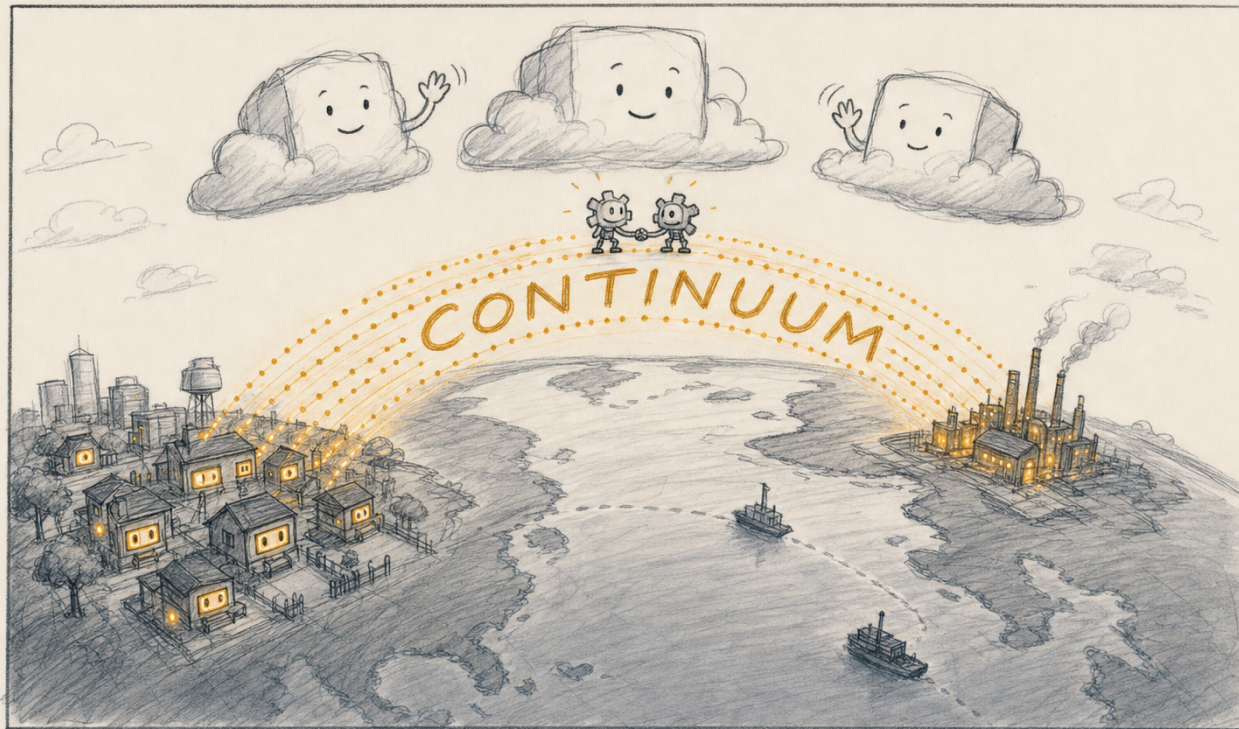
mO can also build little helpers called mims, tiny bots with one job each. Some answer questions. Some watch for trouble. The smartest ones, we call them agents, make decisions and work as a team.



## SCENE 08

Reaching Far Away  
Continuum

## SCENE 8 — CONTINUUM



cloud isn't the boss anymore — just another teammate.

---

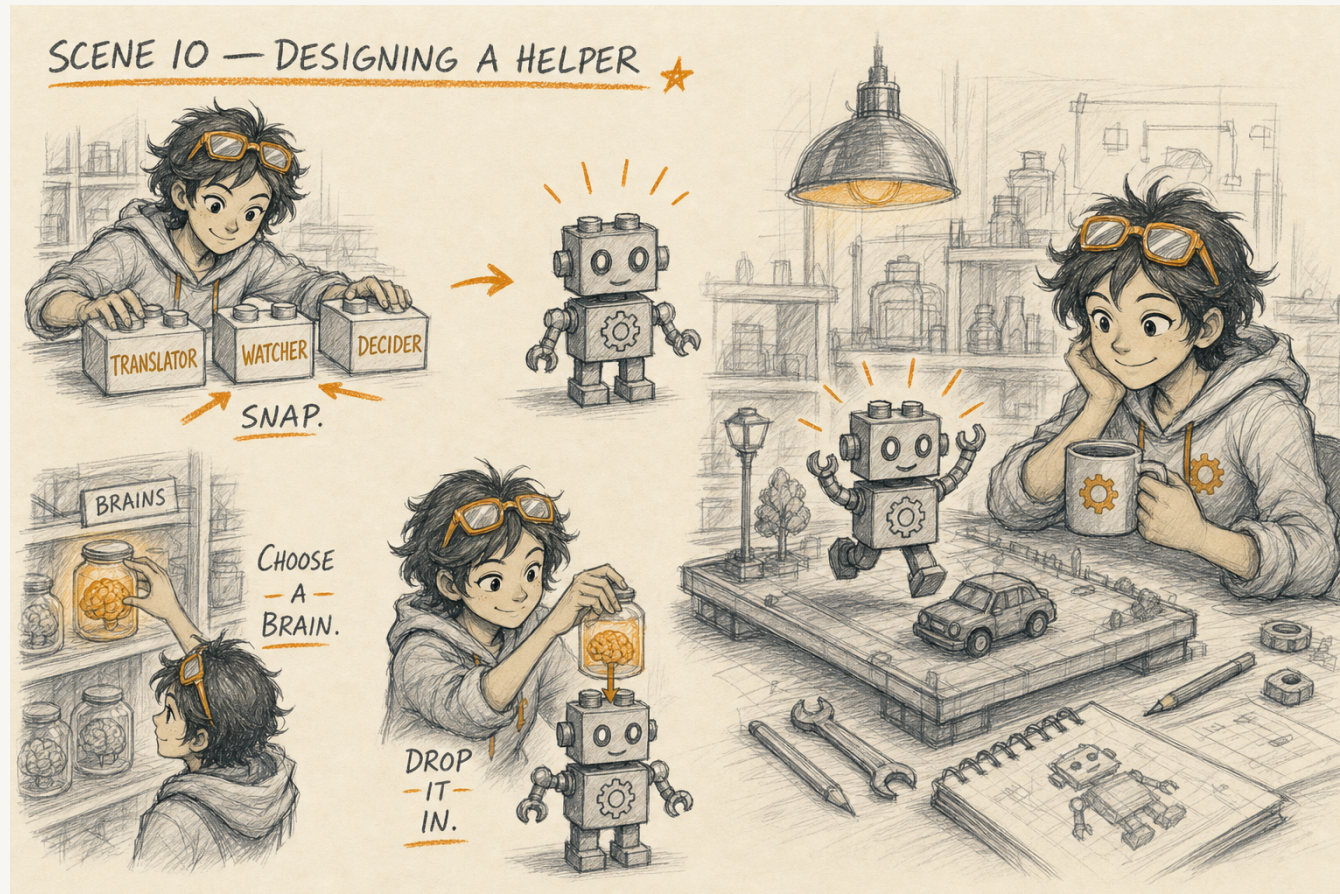
When friends are far apart, mO builds a bridge called Continuum, so devices anywhere in the world can still find each other and work together. The cloud isn't the boss anymore. It's just another teammate.



## SCENE 09

Ada's Glass  
Workshop,  
mimOE Studio

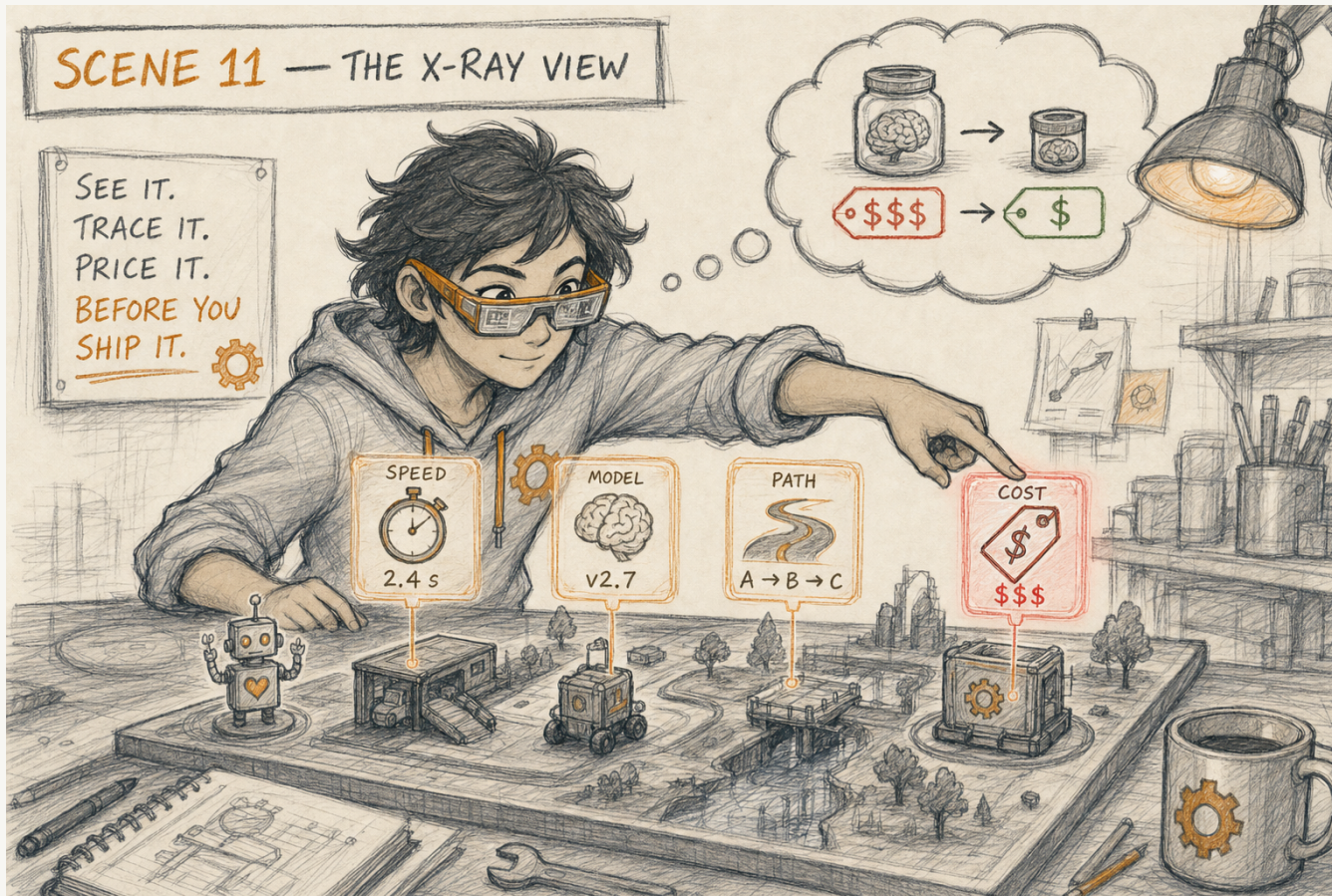
This is Ada. And this is her workshop, **mimOE Studio**. In about five minutes, Ada has her own little world of smart devices and helpers, right on her own computer. No giant bills. No risky button to press. Just a safe place to invent.



## SCENE 10

## Designing a New Helper

Inside the workshop, Ada snaps helpers together like building blocks, picking which brain they use and what job they do. Then she drops them into her tiny world to see what happens.

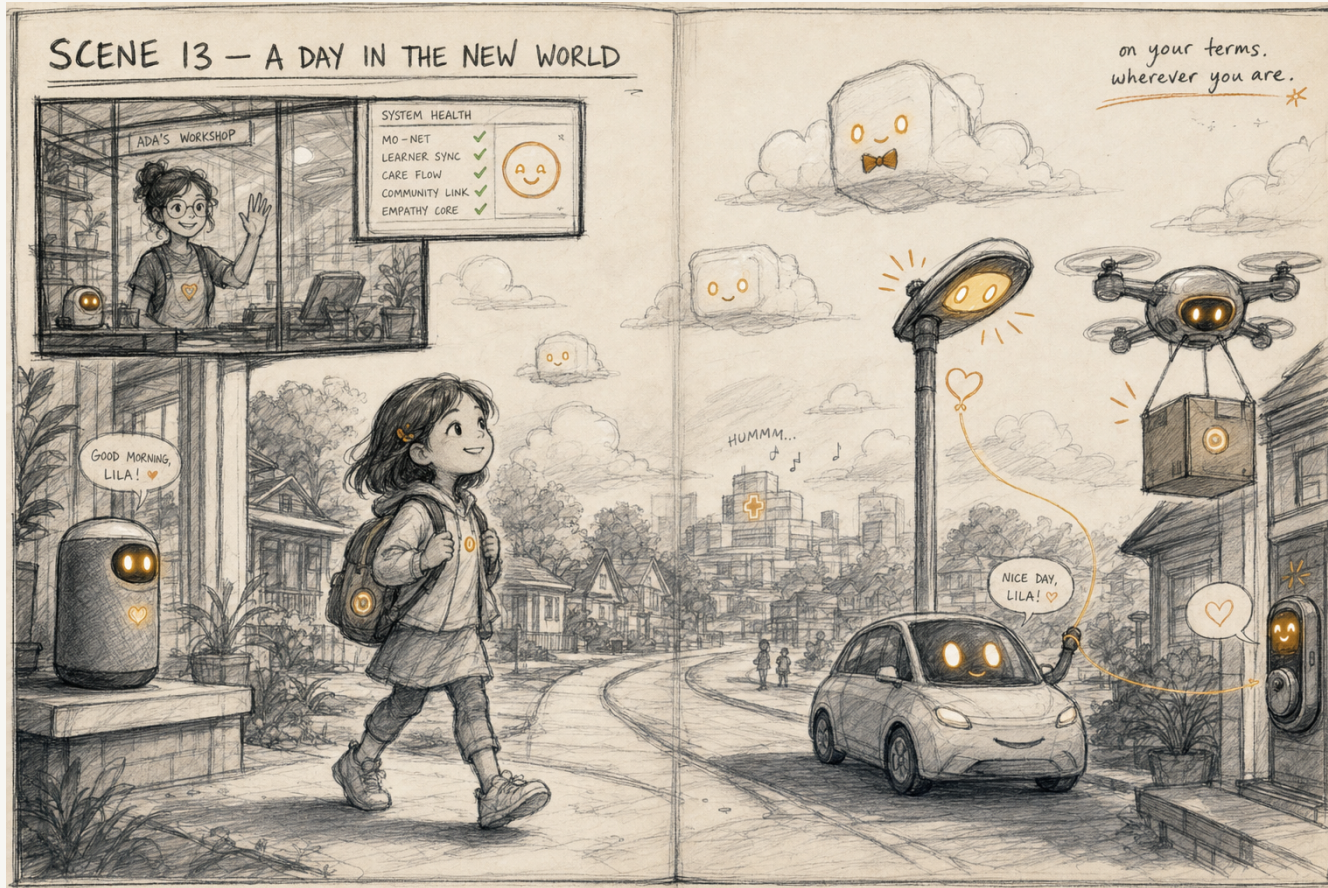


## SCENE 11

## The X-Ray View

Ada's glasses show her everything: how fast each helper works, which brain it used, the road it took, and what it would cost in the real world. She can fix problems before they ever leave the workshop.





SCENE 13

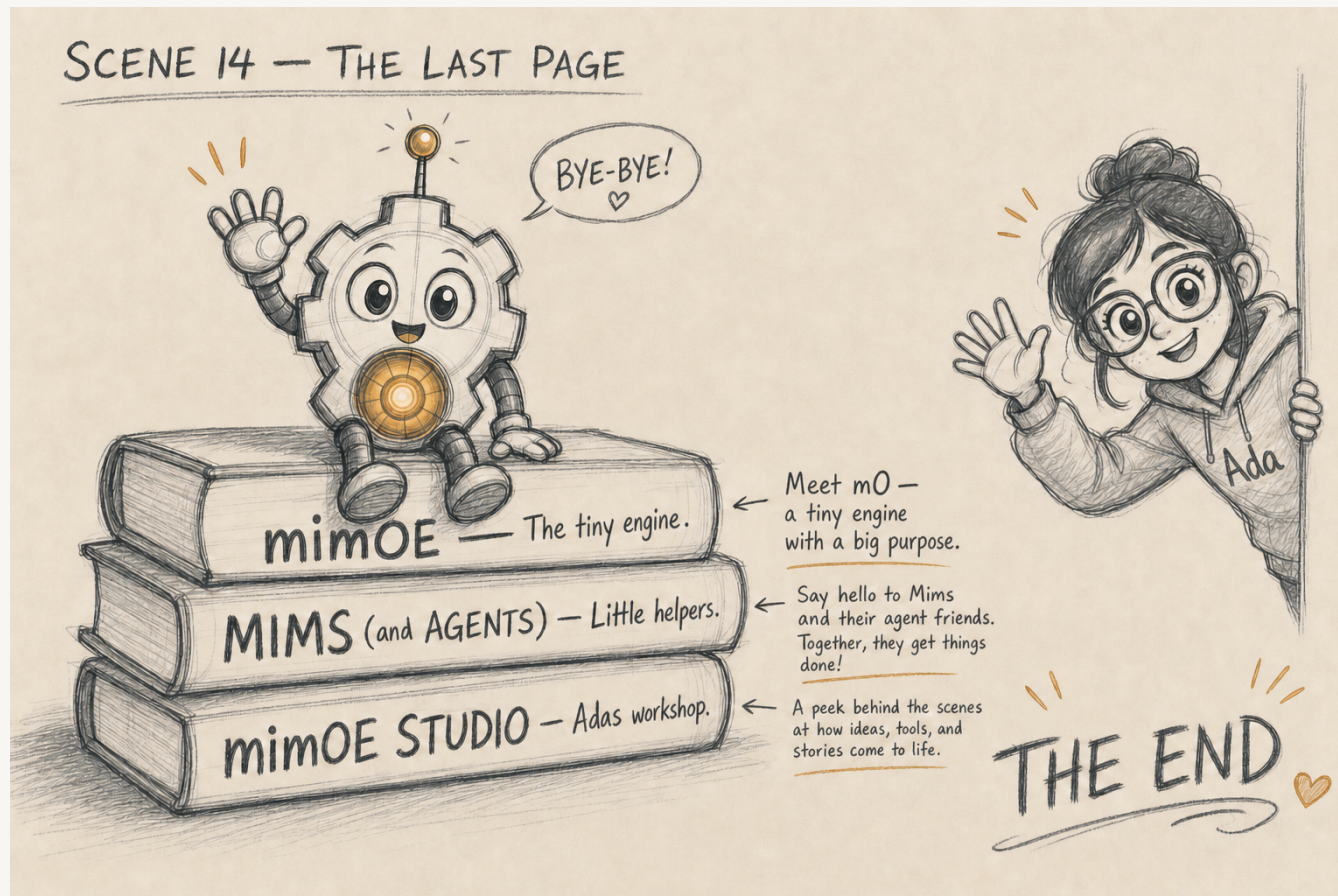
A Day in the New World

---

This is the world mO helps build. Smart things that think for themselves. Smart things that work together. On your terms. Wherever you are.

## SCENE 14

## The Last Page



mimOE is the tiny engine. Mims and agents are the little helpers. mimOE Studio is the workshop where Ada designs, tests, and watches them all, safely, before sending them out into the world.

## ABOUT THIS STORY

# Three little words to remember.

**mimOE** The tiny engine. It lets any device think for itself and talk to its neighbors.

**mims & agents** The little helpers. Each one does a job. The smart ones make decisions together.

**mimOE Studio** Ada's workshop. Where humans design, test, and watch all of this safely, before sending it out into the world.



---

## SOURCES

- [mimOE Developer Portal](#)
- [mimik Launches mimOE Studio — Business Wire \(May 27, 2026\)](#)